

ALSOMAC COLOR & FOREIGN MATERIAL SORTER

LED HYPER SORTER

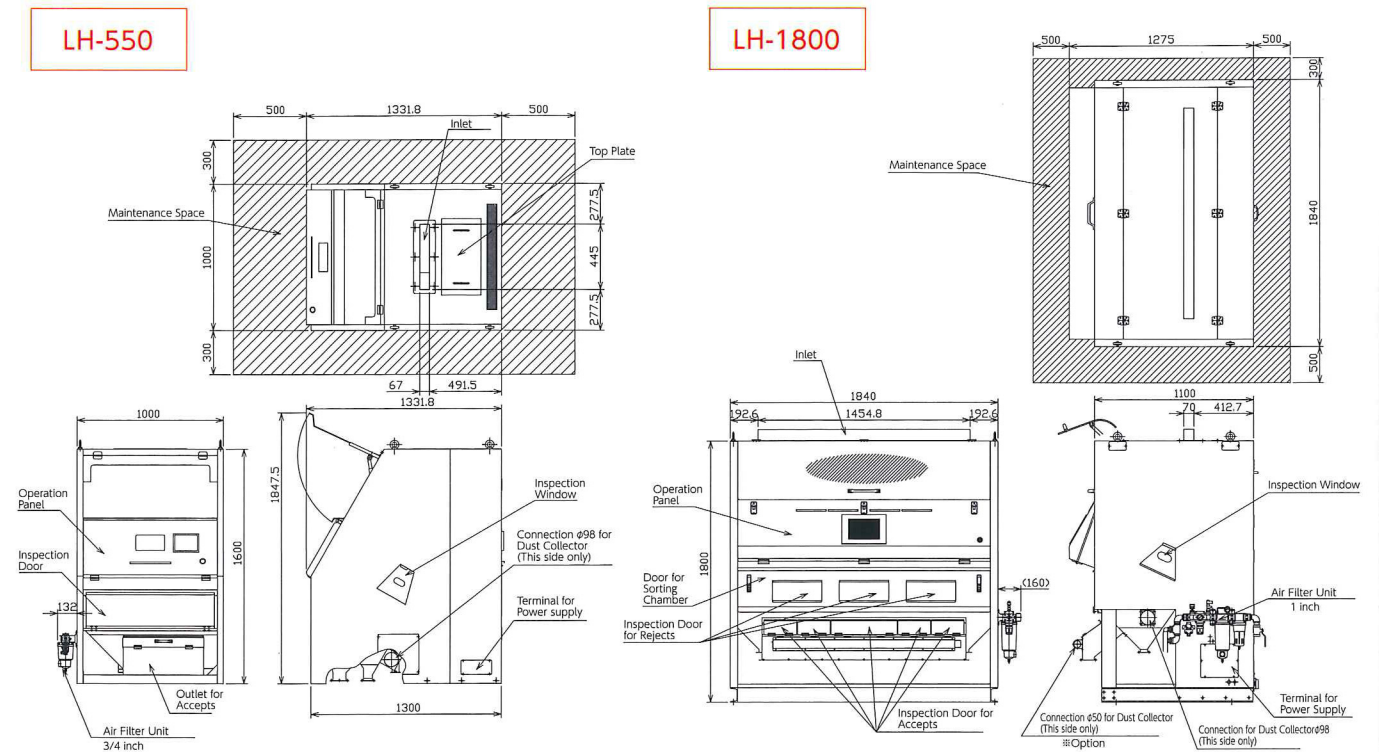
LH-SERIES

LHT-1800/LHT-1100/LHT-750/LHT-550/LHT-270

LHD-1800/LHD-1100/LHD-750/LHD-550/LHD-270



External Dimension ● LH-550 & LH-1800



Specification / LED Hyper LH-series *Specifications are subject to change without any notice.

LHT-1800/LHD-1800 ● LHT-1100/LHD-1100 ● LHT-750/LHD-750 ● LHT-550/LHD-550 ● LHT-270/LHD-270

Model	1800		1100		750		550		270	
	LHT	LHD	LHT	LHD	LHT	LHD	LHT	LHD	LHT	LHD
Length (mm)	1,289	1,289	1,289	1,289	1,289	1,289	1,334	1,334	1,282	1,282
Width (mm)	1,840	1,840	1,380	1,380	1,380	1,380	1,000	1,000	600	600
Height (mm)	1,800	1,800	1,800	1,800	1,800	1,800	1,600	1,600	1,550	1,550
Required Power	Single-phase 200/220/240, 50/60 Hz									
Air Consumption (l/min) *1	700~2,320		500~1,610		350~1,260		350~910		300~800	
Dust Collector (M3/min) *1	25~35		20~30		20~30		5~10		5~10	
Chute type	U chute or Plain chute									
Quantity of Chute (100mm)	12		8		6		3 *2		1 *3	
NIR sensor	Rear		Rear		Rear		Front		Front	
Memory	100									
Capacity *4	2.0~18		1.2~11		0.8~7.5		0.6~5.5		0.3~2.7	
Condition of Use	Temperature 0-40°C, Humidity 20-80% with no condensation									

*1: These values are subject to change depending on raw materials and purpose of sorting.

*2: 200mm width x 1pc and 100mm width x 2pcs

*3: 150mm for 1st sort, 40mm for 2nd sort

*4: All 1st sort, white short grain rice, capacity is subject to change depending on raw materials and purpose of sorting.



IROM ITALIA s.r.l.
IMPORT - EXPORT
RICE MILLING MACHINERY - LABORATORY EQUIPMENT

Via Volturmo, 80 - Fontana Bldg.
20861 Brugherio (MB) Italy
tel. 0039 039 87 86 73 fax 0039 039 88 48 28
info@iromitalia.com www.iromitalia.com





Drastic design change for compact body

If you want more concentrate wastes and pure materials and want to reduce the running cost, LED Hyper is your choice!

ALSOMAC COLOR & FOREIGN MATERIAL SORTER

LED HYPER SORTER LH-SERIES

LHT-1800/LHT-1100/LHT-750/LHT-550/LHT-270
LHD-1800/LHD-1100/LHD-750/LHD-550/LHD-270

Anzai Manufacturing Co., Ltd., the pioneer of color sorter in Japan, has completed the brand new color sorter, LH-series. We are pleased to have opportunities to contribute your company with this new machine.

Main Features

- 1 The color of LEDs lighting is selectable on Touch Panel!**
LED lighting is also used for NIR sensor, too.*1
*1 Only for T-type

You can change the color of LED lighting by one switch according to your sorting purpose and materials.



Dark blue LED and Green LED are arranged alternately.



*We also have other colors of LED. As for the details, contact your agent.

- 2 Low running cost & High performance**

Life of LED is more than 10 times longer than that of fluorescent lamp. Consumption energy of LEDs would be app. 60% off compared with that of halogen lamps. The wavelength range of LED lighting is tighter compared with that of fluorescent lamp, which makes the signal difference of good one and bad one clearer.

To stabilize the light amount of lamp, fluorescent lamp always requires 'Warming-up'. Since LEDs are much more stable than fluorescent lamps, warming up is not required.

LED Mirror structure makes the light converge on the target materials. With this structure, camera can see the materials more clearly and efficiently, which realizes more precise selection and energy-saving.

With new design and our unique LED system, you can drastically cut the running cost and get high performance with LH-series.

- 3 New Camera and Ejector**

- 1 New & Improved CCD camera makes it easier to remove small speck.

- 2 New ejector makes the air consumption app. 40 % off compared with conventional ejector, which makes the final rejects more concentrated.

- 4 Ejector Count System** *Only for LH-550/750/1100/1800

You can check the blowing frequency of ejector by ejector count system. With this system, you can check the contamination ratio of raw materials and prevent abnormal operation by analyzing its data.

- 5 Memory**

LH-series memorize the sorting data up to 100!

- 6 Useful Function**

- 1 Functions for feeder**

By several functions such as 'Soft Start System', 'Feedback System', 'Intelligence EJ Control' and 'Auto Clean Control System', the sorting performance is excellent even at the beginning and end of sorting.

- 2 Error Record**

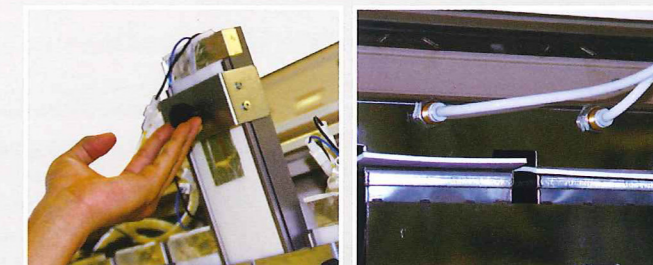
Error record system makes it easier to identify the machine's trouble. Maximum 200 error data will be stored automatically.

- 3 Check items before Daily Operation System** *Option

This system forces the operator to check the machine before daily operation, which prevents the poor sorting performance caused by operator.

- 4 Remote Control System** *Option

With this system, you can control the machine remotely.



▲ You can easily replace the chutes without any tools.

▲ Auto Clean Control System for feeders.

